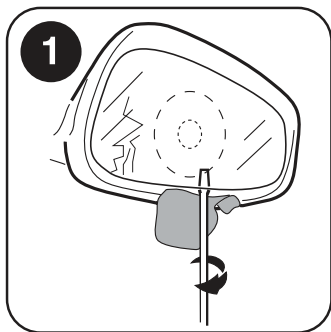
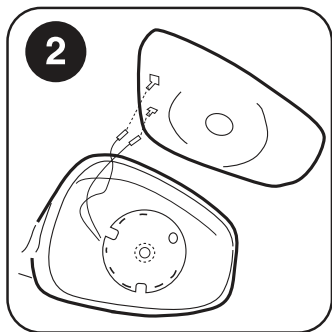


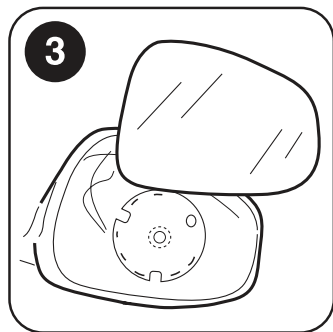
## Fit your replacement mirror in three easy steps:



**1.** Protect the wing mirror cover with a cloth, insert a flat screwdriver behind the backing plate of the wing mirror glass. The mirror should pop out quite easily.



**2.** If the existing mirror is heated, you will need to unplug the heater terminals; you can do this by gently pulling the wires apart from the backing plate. You may want to label the wires so that you know which terminal they fit onto.



**3.** You are now ready to fit your new mirror, if you are replacing a heated mirror you will need to attach the wires onto the heater terminals on the backing plate before you fix the mirror into place. Line up the backing plate and gently push the mirror applying even pressure, whilst taking care not to push hard enough to break the mirror. You may hear a click when the base plate has connected into the mirror unit.

**Note:** Not all mirrors are supplied with heating elements – see application guide for available options. You will need to readjust your mirror position after fitment. Please wear protective gloves when handling broken glass.